

# LV JUICE

## VERSATILE | LED ADJUSTABLE | CEILING LAMP

Easily adapts to different locations and applications onsite with **adjustable colour temperature** and **sensor** settings.

FEATURES & TECHNICAL SPECIFICATIONS



LEDBKHD-16SEN  
**\$55.00** +GST  
SPECIAL PRICE

**RUN OUT STOCK!**

**e** ECO LIGHT



**This Month**

OUR FAVOURITE CRIMP TECHNOLOGY

PAGE 4

MULTIFUNCTION INSTALLATION TESTERS

PAGE 6

WATERPROOF CONNECTION SYSTEM

PAGE 8

**FREE** MOLLY WOPPY COOKIE

WHILE STOCKS LAST

When you spend over \$500 (+GST) on one invoice this month



★ NZ MADE ★

www.transnet.co.nz



# TE'S UTILUX TRAILER PLUGS

TE Connectivity's Utilux flat trailer connector has two parts - plug and socket. Connectors are UV stabilised, made from impact resistant thermoplastic and have a spring loaded lid that locks the connection. Nickel plated contacts provide excellent electrical performance. Available loose or in blister packs including installation instructions.

UV STABLE,  
IMPACT  
RESISTANT  
HOUSING



H40904-HOLDER



H40905/1



H40904/1



AUTHORISED DISTRIBUTOR

Cat No.	Description
H40904/1	7 PIN TRAILER PLUG (MALE) - LOOSE
H40904/D1	7 PIN TRAILER PLUG (MALE) - BLISTER
H40905/1	7 PIN TRAILER PLUG BASE (FEMALE) - LOOSE
H40905/D1	7 PIN TRAILER PLUG BASE (FEMALE) - BLISTER
H40904-HOLDER	7 PIN TRAILER PLUG HOLDER

# BATTERY BOOSTER CLIPS

## FEATURES

- Equal quantities of positive & negative clips
- H811 has Copper shunt between handles
- Supplied with coloured plastic handles
- All clips are supplied with a Copper cable lug, screw & nut



H811/2



AUTHORISED DISTRIBUTOR

SUPPLIED  
WITH COLOURED  
PLASTIC  
HANDLES



H812/2

Cat No.	Material	Max. AMPs	Jaw Opening
H811/2	2MM COPPER	200	38MM
H812/2	2MM STEEL ZINC PLATED	100	38MM

## TRANSNET MONTHLY GIVEAWAY SUPPORTING KIWI BUSINESSES

It seems you're big fans of a good old-fashioned cookie with your hot drink for morning or afternoon tea and so are we here at TransNet, so back by popular demand this month's New Zealand made giveaway is another offering

from our friends at Molly Woppy and their handcrafted artisan cookies with premium ethically sourced ingredients. As always, it's impossible to pick a favourite, so we've chosen another random

[mollywoppy.co.nz](http://mollywoppy.co.nz)

selection of their great flavours (although chocolate is a necessary component) to give you a nice surprise when you open the box. See if you can get your hands on all three!







## ENVIRONMENTALLY SEALED HEATSHRINKABLE CRIMP CONNECTORS

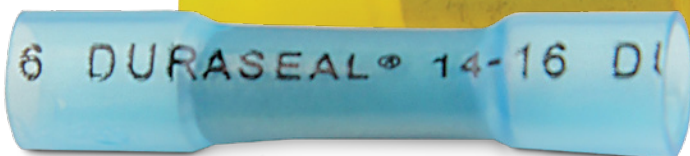
# DURASEAL

ENVIRONMENTALLY SEALED HEATSHRINKABLE  
| CRIMP CONNECTORS |

D4060003  
3-6mm<sup>2</sup>



D4060002  
1.2-2.5mm<sup>2</sup>



D4060001  
0.38-0.95mm<sup>2</sup>



### FEATURES

- Crimp link inside sealant-lined heatshrink sleeve
- Adhesive lining enhances protective qualities
- Completely environmentally sealed - protects from water, condensation, salt, and corrosion
- Provides strain relief
- Protects against vibration
- Fully insulates connection
- UL, CUL and Lloyds listed

### APPLICATIONS

- Automotive/truck wiring, repair, maintenance & accessory installations
- OEM automotive/truck wire harness fabrication
- Commercial wiring (pumps/pools/spas)
- Marine electronics
- Fleet maintenance
- Appliances



Sold in packs of 20



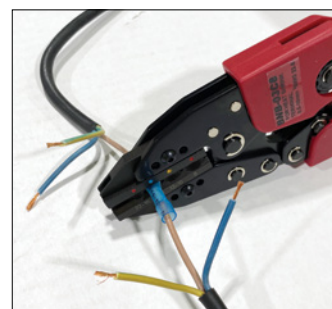
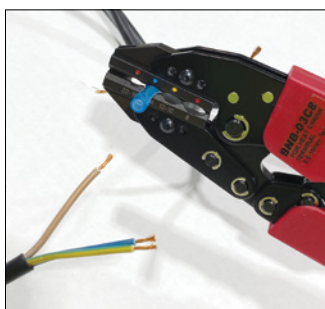
AUTHORISED DISTRIBUTOR

## HEATSHRINK CONNECTOR CRIMPER

Professional quality crimper, designed specially for crimping heatshrink style crimp connectors without damaging the insulation.

### FEATURES

- Suitable for red, blue and yellow heatshrink crimp connectors
- Machined dies
- Length - 260mm



Cat No.

BNB-03C8

Description

HAND RATCHET CRIMPER FOR HEATSHRINK STYLE CONNECTORS

USE WITH  
DURASEAL







# SABC

## BOOTLACE CRIMP TOOL

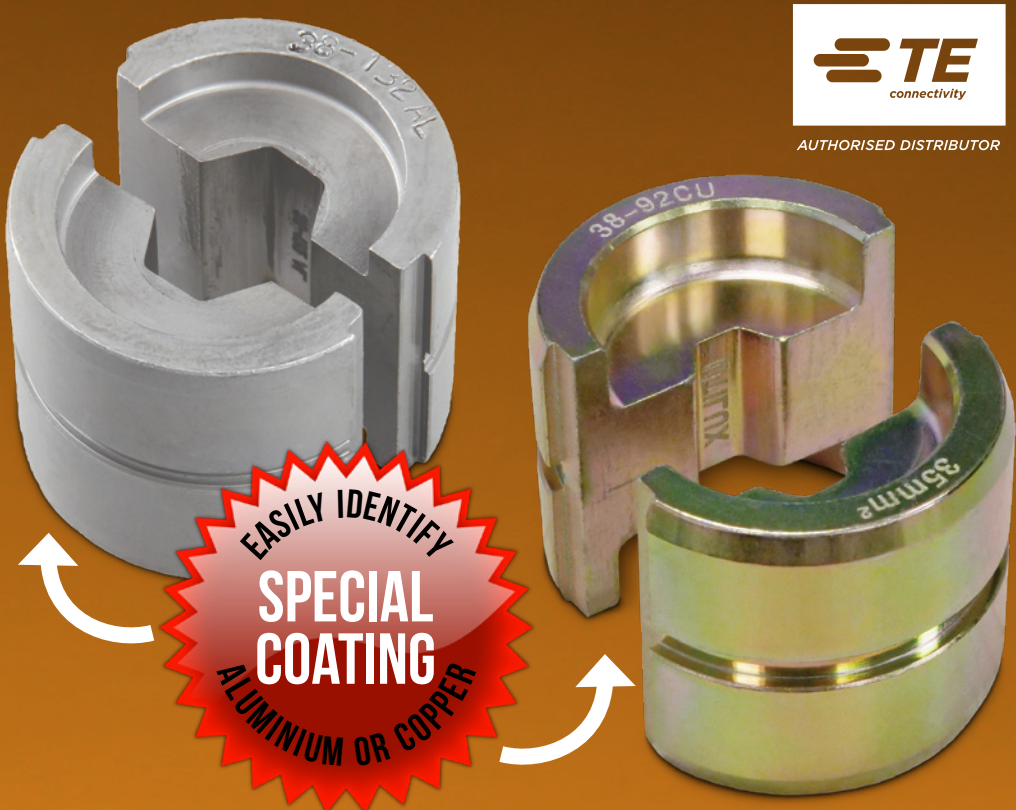
Features unique crimp action, which automatically crimps a range of terminal sizes. Insert the wire and ferrule, and the tool self-adjusts and crimps. Ratchet control for crimp consistency.

Cat No.	Range (mm <sup>2</sup> )	Crimp Type	Connector Type
SABC6	0.25-6	SQUARE	BOOTLACE
SABC10	0.75-10	SQUARE	BOOTLACE
SABC16	4-16	SQUARE	BOOTLACE

SELF ADJUSTS  
DIE-LESS  
SELF ADJUSTS

# 1#38 12TON DIES

These TE Connectivity (TE) dies are made of Through Hardened Steel that complies with AS1442 and machine finished for a lifetime of accurate crimping. Their special coating makes die selection on the job easier and faster.



# 12TON CRIMP SET

Fast and easy to use, this hand operated large head compression tool features durable, lightweight fibreglass handles, automatic pressure conversion and operating motion, rotating head and two stage hydraulic system. Complete with a sturdy carry case.

- HYCP-4113 hydraulic crimp tool
- 8 dies covering 120-300mm<sup>2</sup> Aluminium & Copper



12TONCRIMPSET  
**\$3495.00**<sub>+GST</sub>

SABC6  
**\$120.00**<sub>+GST</sub>

SABC10  
**\$127.50**<sub>+GST</sub>

SABC16  
**\$140.00**<sub>+GST</sub>





## MULTIFUNCTION INSTALLATION TESTERS



### MI3102BT

All MI3100BSE features **PLUS**

ISFL and IMD testing in IT systems  
Tip Commander  
20m Earth testing set

### MI3100BSE

All MI3100S features **PLUS**

B-type RCD and EV RDC-DD testing  
Earth Loop impedance testing without tripping RCD, including 6 mA RDC-DD in EV charger  
Built-in memory and comes with PC software for downloading/reporting

### MI3155

All MI3102BT features **PLUS**

Colour touchscreen  
Li-Ion battery pack  
Custom programmable testing sequences  
Insulation resistance test up to 2.5 kV  
4-wire Low Ohm test  
**AND MORE**

### MI3100S

Complete multifunctional tester  
Built-in NZ fuse table for automatic pass/fail Earth Loop Impedance evaluation  
RCD AUTO test (AC, A and F type)  
Earthing-rod resistance test (3 wire method)



**VIEW THE RANGE**





## SLIMLINE FIRE COLLARS

These collars consist of a Stainless Steel shell produced in two hinged halves, lined with intumescent material. Upon exposure to heat the SL collar will quickly and effectively close any openings that may form due to the melting away of services.

### FEATURES

- Ultra-slim flange and body design ensures easy installation in awkward situations
- Tested to AS1530.4:2014 and AS4072.1:2005 at IANZ/NATA accredited laboratories and environmentally tested to ASTM-B117 for semi-external use
- Simple single click clasp
- Up to 2 hours fire rating, depending on system detail
- Stainless Steel
- Water resistant
- Non-corrosive: inert product
- Range of sizes from 50mm Ø to 160mm Ø

USED TO SEAL  
PLASTIC PIPES AS  
THEY PASS THROUGH  
FIRE COMPARTMENT  
WALLS & FLOORS



## TD FIRE COLLARS

Ryanfire TD Fire Collars are a stainless steel casing with fixing legs, pre lined with a Ruberoid graphite loaded strap most commonly fixed around combustible Insulation, cable bundles or combustible pipes. They are designed to be fixed from above within a variety of floor substrates.

### TECHNICAL INFO

- Standard sizes from 40mm to 160mm diameter
- Stainless Steel
- Retro-Fit capable
- Tested to AS1530:2014 / AS4072.1-2005 at IANZ accredited laboratories
- FPANZ Passive Product Registered.
- Suitable for various floor substrates

### APPLICATIONS

Suitable for use around various types of insulation, combustible pipes, cables and Pair Coil services. Ryanfire TD collars are tested on various floor substrates including trapezoidal tray-deck composite floors, timber infill, masonry and precast concrete.



FOR SEALING  
APERTURES AROUND  
SERVICE PENETRATIONS  
PASSING THROUGH  
FIRE RATED  
SEPARATIONS





# GET YOUR FEET WET

## Waterproof Connection System



### Auckland

78 Cryers Road  
East Tamaki  
Auckland  
NEW ZEALAND  
Ph 0800 442 182  
PO Box 39 383  
Howick, Auckland

### Wellington

10 Petone Ave  
Petone  
Wellington  
NEW ZEALAND  
Ph 04 576 2530  
PO Box 39 383  
Howick, Auckland  
NEW ZEALAND  
sales@transnet.co.nz

### TransNet Tonga

#### Nuku'alofa

Lakalakaimonu Multi Utility  
Complex  
Taufa'ahau Road  
Poutaha  
Nuku'alofa  
TONGA  
Ph +67 627 939  
PO Box 2932  
Nuku'alofa  
TONGA  
transnet@kalianet.to

# RATIO SHORE POWER



### RSP16AKITSS

16A kit with 316  
Stainless Steel  
IP56 inlet, 10m  
1.5mm<sup>2</sup> IP67 lead,  
& carry bag

## A waterproof, stylish, and approved shore power connection system for your boat

### Features

- Based on world standard for outdoor connections (IEC 60309)
- Boat inlet with mating connector (moulded or assembled)
- Complies with AS/NZS 3004.2014

### Cable Connectors

- Includes a weatherproof sealing cap to ensure CE compliance

#### 16A IP56 INLET CONNECTOR

- LED power indication
- Watertight moulded construction

#### 16A IP67 PLUG

- Weatherproof marine construction
- Easy assembly

### Stainless Steel Inlet

- Solid Cast Marine Grade 316 Stainless Steel
- Includes an easy locking waterproof cap
- IP56 rated

**Ratio**  
ELECTRIC

TransNet NZ Ltd has made every reasonable effort to ensure the accuracy of this information and it is to the best of our knowledge correct and reliable. Under no circumstances does this constitute an assurance of any particular quality or performance and users should independently evaluate the suitability of products for their desired application. All information in this publication including pricing, drawings, illustrations, images and graphic designs are reflections of our current understanding. TransNet NZ Ltd reserves the right to make any adjustment to this information at any time. Our liability for the products outlined in this publication is set forth in our standard terms and conditions of trade. In case of any potential ambiguities or questions, please contact us for clarification.

